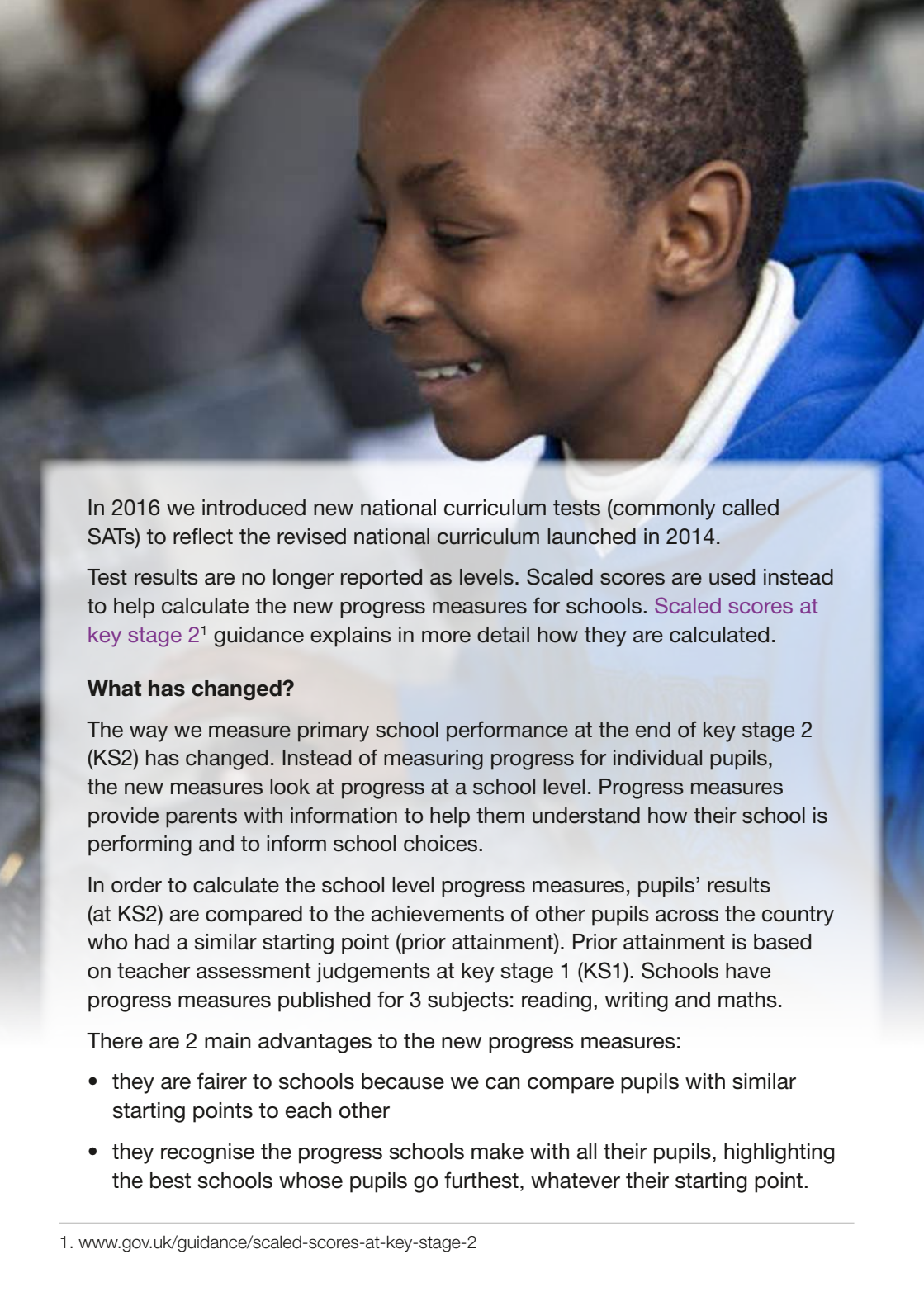




Standards
& Testing
Agency



Information for schools and parents: Primary school progress measures



In 2016 we introduced new national curriculum tests (commonly called SATs) to reflect the revised national curriculum launched in 2014.

Test results are no longer reported as levels. Scaled scores are used instead to help calculate the new progress measures for schools. [Scaled scores at key stage 2¹](#) guidance explains in more detail how they are calculated.

What has changed?

The way we measure primary school performance at the end of key stage 2 (KS2) has changed. Instead of measuring progress for individual pupils, the new measures look at progress at a school level. Progress measures provide parents with information to help them understand how their school is performing and to inform school choices.

In order to calculate the school level progress measures, pupils' results (at KS2) are compared to the achievements of other pupils across the country who had a similar starting point (prior attainment). Prior attainment is based on teacher assessment judgements at key stage 1 (KS1). Schools have progress measures published for 3 subjects: reading, writing and maths.

There are 2 main advantages to the new progress measures:

- they are fairer to schools because we can compare pupils with similar starting points to each other
- they recognise the progress schools make with all their pupils, highlighting the best schools whose pupils go furthest, whatever their starting point.

1. www.gov.uk/guidance/scaled-scores-at-key-stage-2



The [Primary school accountability in 2016: technical guide](#)² and accompanying video explain in more detail how schools' progress measures are calculated.

What progress measures mean

Most schools will have progress scores between -5 and $+5$.

If a school has a progress score of 0 this means that on average their pupils achieved similar results at the end of KS2 (end of year 6) to pupils in other schools with similar results at the end of KS1 (end of year 2).

If a school has a positive progress score this means that on average their pupils made more progress than pupils in other schools with similar results at the end of KS1.

For example: a score of $+3$ in reading would mean that on average pupils at the school got 3 scaled score points more in the KS2 English reading test, compared to other pupils nationally with similar results at the end of KS1.

A negative score doesn't mean a school has failed or pupils have made no progress. It just means that on average their pupils have made less progress than pupils in other schools with similar results at the end of KS1.

For example: a score of -4 in maths would mean that on average pupils at the school got 4 scaled score points fewer in the KS2 maths test, compared to other pupils nationally with similar results at the end of KS1.



Further information

For parents, your child's teacher will be able to answer any queries you may have about the tests and teacher assessment, or you can visit www.gov.uk/STA for more details.

Schools can find more information about:

- KS1 tests at www.gov.uk/government/collections/national-curriculum-assessments-key-stage-1-tests
- KS2 tests at www.gov.uk/government/collections/national-curriculum-assessments-key-stage-2-tests
- scaled scores and the KS2 tests at www.gov.uk/guidance/scaled-scores-at-key-stage-2

© Crown copyright 2017

Information for parents: primary school progress measures

Electronic version product code: STA/17/7916/e ISBN: 978-1-78644-388-5

OGL

You may re-use this document/publication (not including logos) free of charge in any format or medium, under the terms of the Open Government Licence v3.0. To view this licence, visit www.nationalarchives.gov.uk/doc/open-government-licence/version/3 or email: psi@nationalarchives.gsi.gov.uk.

This document is available for download at www.gov.uk/government/publications.